



COMPANY PROFILE



Pioneer Pump was founded in 1998, on the idea that pumps should be better. Our innovative designs move more pumpage, more efficiently. Providing extreme performance with minimal energy usage.

pioneerpump.com



Franklin Electric



YOUR PARTNER FOR **WATER SYSTEMS**



ABOUT FRANKLIN ELECTRIC

Franklin Electric is a global provider of complete systems for the movement of water.



ABOUT PIONEER PUMP

Pioneer Pump, a brand of Franklin Electric, specializes in the engineering and manufacturing of large centrifugal pumps and packages.



HIGH PERFORMANCE PUMPS

Transport water and wastewater for any sized job with our proven portfolio of centrifugal pumps.

MEET THE PUMP EXPERTS

Since its formation over twenty years ago, Pioneer Pump has developed into one of the world's leaders in the design and supply of high performance, high efficiency pumps used in mineral, industrial, municipal and pump hire industries.

With seven families of pumps and over sixty models to choose from, Pioneer pumps are chosen by our customers for their efficiency, innovative designs and robust construction.

Operating globally from four facilities in America, Australia, Europe and south Africa, the company designs and builds engine driven and electric motor powered pumpsets up to 450mm in size and capable of flows up to 4,200 m³/hr and pressures over 20 bar in both flooded and suction lift conditions.

Using advanced designs and modern manufacturing techniques, all Pioneer Pumps are built to reduce your costs of pumping through minimizing downtime and fuel consumption.

Contact our team today to discuss your needs. Whether you want to buy, distribute, hire, or maintain an existing Pioneer Pump, we are sure that we can help you make the right decision.

OPERATING WORLDWIDE

OUR MARKETS

With a growing network of distributors and partners around the world and operating in a wide range of markets, Pioneer has earned a reputation for building rugged and fuel efficient pumpsets for the most challenging conditions and demanding applications.



MINING & QUARRYING

No other company has such a broad range of engine driven portable pumps for de-watering and maintaining your water systems. With a wide range of pumps in our portfolio, Pioneer has a solution.



CONSTRUCTION & RENTAL

Pioneer Pumps are robust and fuel efficient making them the pump of choice in the rental and construction markets around the world - especially in environmentally sensitive applications



INDUSTRIAL & ENERGY

Pioneer offers the only seismically tested dry prime type pumps to the nuclear industry. Along with their rugged construction and high efficiency, Pioneer pumps are chosen for applications where absolute reliability is essential.



MUNICIPAL & WASTEWATER

Pioneer offers a wide range of standard centrifugal and self-priming pumps for flows up to 4,200m³/h or heads over 200m with vortex, solids handling or chopper impellers for those tough applications.



AGRICULTURE

The Pioneer standard centrifugal pumps offer tremendous efficiency and reliable year on year operation in all types of water irrigation and slurry applications around the world.



OIL & GAS

We design, manufacture and supply a wide range of ATEX and Rigsafe certified equipment for use in both upstream and downstream applications driven by either engines or electric motors.

*We don't just sell, rent and service pumps,
we **design and manufacture** the highest
performing pumps on the market.*

OUR CAPABILITIES

From its humble beginning, Pioneer has grown to become one of the industry leaders with more than 30,000 pumps in service around the globe. With four factories in Europe, Africa, Australia and the United States, the company has the global footprint to support your business regardless of your location. From the frozen mines of Siberia to the deserts of the Middle East, we can provide you with the products, service and expertise you require.



DESIGN & MANUFACTURE

Through our skilled in-house engineering team and experience in the industry, Pioneer Pump designs and manufactures high performing pumps, pumpsets and solutions to specifically meet your requirements.



SALES & RENTAL

Although primarily focused on designing and selling pumps, the company is one of the few in the world able to rent or hire turnkey and equipment solutions to our customers in the region.



AROUND THE WORLD

Thanks to its worldwide facilities and global partner network, you are never too far from a Pioneer Pump location to provide your business with the support and service you require.



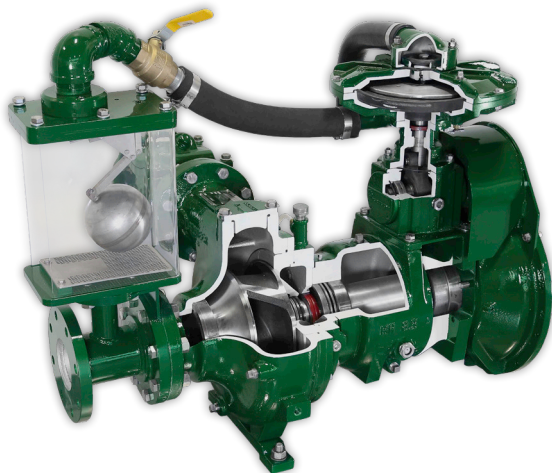
CERTIFICATION & MEMBERSHIP

Pioneer Pump is an ISO9001 Quality Assured organisation operating the most modern manufacturing and rental businesses. All of our equipment is CE and ATEX certified where required.

PERFORMANCE THROUGH INNOVATION

TECHNOLOGY

Pioneer pump was founded to provide advanced technological solutions to challenging pumping applications. Through modular design and advanced hydraulics, the company offers the largest range of dry prime portable pumps in the world as well as end suction, wet prime and submersible pumps.



ENGINEERED SOLUTION

The company offers customers complete engineered solutions for specific applications. These can range from complete quarry dewatering packages to fully engineered, tested and approved nuclear industry pumpsets capable of operating after severe seismic events.



FEATURES & BENEFITS OF OUR PUMPS

HIGH EFFICIENCY PUMP ENDS

High performance, unrivalled and efficient hydraulic design.



LOW RUNNINGS COSTS

Pioneer pumps use less power per cubic meter pumped than any other dry prime design, resulting in reduced fuel consumption.

LARGE IMPELLER EYE

Excellent suction performance, low NPSHr and good vapour and gas handling.



MAINTAINING PRIME UNTIL THE LAST DROP

Pioneer pumps prime quickly and keep their prime, pumping until the last possible moment, well beyond customer expectations.

PREMIUM MATERIALS OF CONSTRUCTION

Standard build includes Stainless Steel impeller (CA6NM), Ductile Iron (GGG40) bodies and heavy duty bearings, maintaining your performance for years of reliable pumping.



SMOOTHER RUNNING FOR LONGER

Using premium high quality materials of construction provides superior reliability and less maintenance, resulting in reduced cost of ownership.

RESULTS THROUGH EXPERIENCE



INSTALLATION & SUPPLY

Pioneer Pump in the UK offers complete turnkey solutions to customers including; design, install and operation of our pumps and accessories, across all industries. Whether it is bypassing a sewer, dewatering a quarry or mine or even installing standby fire pumps for marine applications, Pioneer Pump is capable of offering a complete turnkey solution.

AFTERSALES SUPPORT

From four international operations, distributors and its own hire depots, Pioneer offers an unsurpassed level of spares availability and customer support on a 24 hours a day basis. Whether you are mining in West Africa, pumping oil in the Middle East or sewage bypass pumping in Europe, we know that downtime should be avoided and support systems are in place to manage this.

CONFIGURATION OPTIONS

All Pioneer pumpsets are available in a variety of configurations including sound attenuated canopies, crash skids complete with ROCK AND RAIN system, multiple axle trailers or frame mounted electric sets for use in both external and internal installations.

CANOPY SKIDS



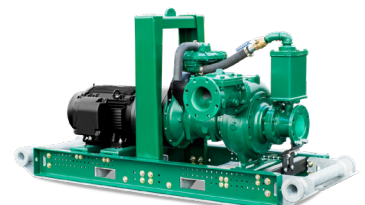
OPEN SKID



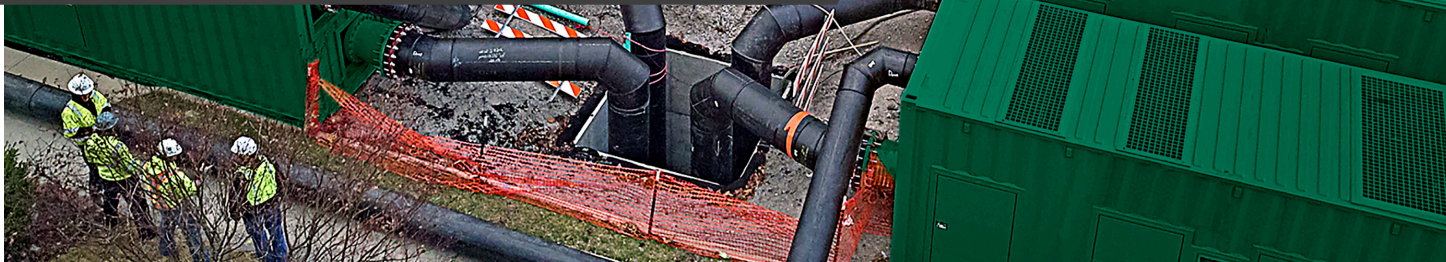
ROAD TOW TRAILER



ELECTRICPAK™



PIONEER PRIME



All Pioneer standard centrifugal pumps can be upgraded to a Pioneer Prime vacuum-assisted self-priming pump that delivers extreme flows with high head capability and utilizes our advanced priming system. This dry prime system is capable of rapid (50 CFM) unattended priming and operation for the ultimate in reliable performance, even in run-dry situations and suction lift applications. The Pioneer Prime system combined with our low NPSHr impeller design achieves better suction lift and faster priming than the competition.

KEY BENEFITS

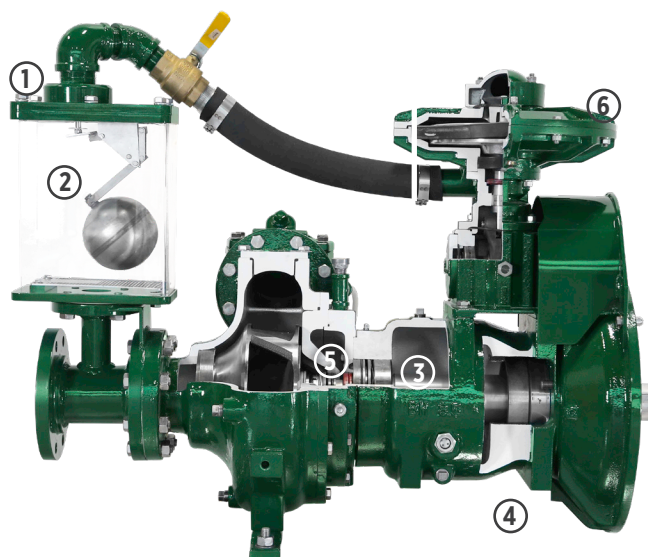
- Enables unassisted dry priming
- Achieve higher performance and increased energy efficiency
- Faster priming time compared to compressor-driven priming systems

THE PIONEER PRIME ADVANTAGE

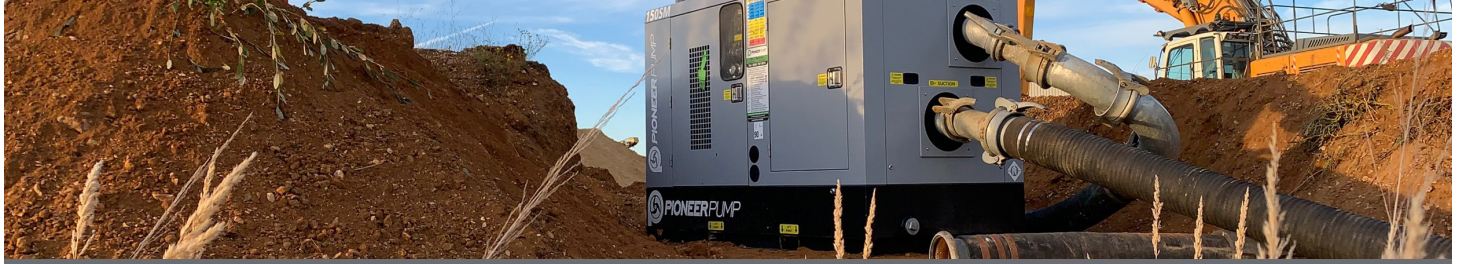
A true dry-prime pump, our self-priming system eliminates the need for water to prime the pump and is engineered to prevent product carryover. The Pioneer Prime hydraulic design maximizes lift capability and offers both quick initial priming and continuous, unattended reprime under auto stop/start conditions.

Features:

- 1. Stainless Steel Air Separation Valve**
Allows for rapid priming with no product carryover
- 2. Priming Chamber**
Stainless steel internal parts for longer life
- 3. Reliable Sealing Components**
Hybrid cassette seals simultaneously prevent leakage and eliminate shaft wear
- 4. Heavy-Duty Modular Bearing Housing**
Designed to run at high speeds without risk of shaft or bearing failure
- 5. Run-Dry System**
Oil-lubricated mechanical seal allows the pump to run completely dry without damage
- 6. Vacuum Pump**
Belt driven from pump shaft



SOLIDS HANDLING



Pioneer designs and builds the most advanced range of solids handling dry-prime pumps with **maximum flows of 4,200 m³/h** and **pressures in excess of 22 bar (700ft)** for use in applications with **solids up to 76mm** in size. These can be manufactured in Ductile Iron, Duplex Stainless Steel or 27% Chrome Iron for slurry applications with high solids content such as dredging.

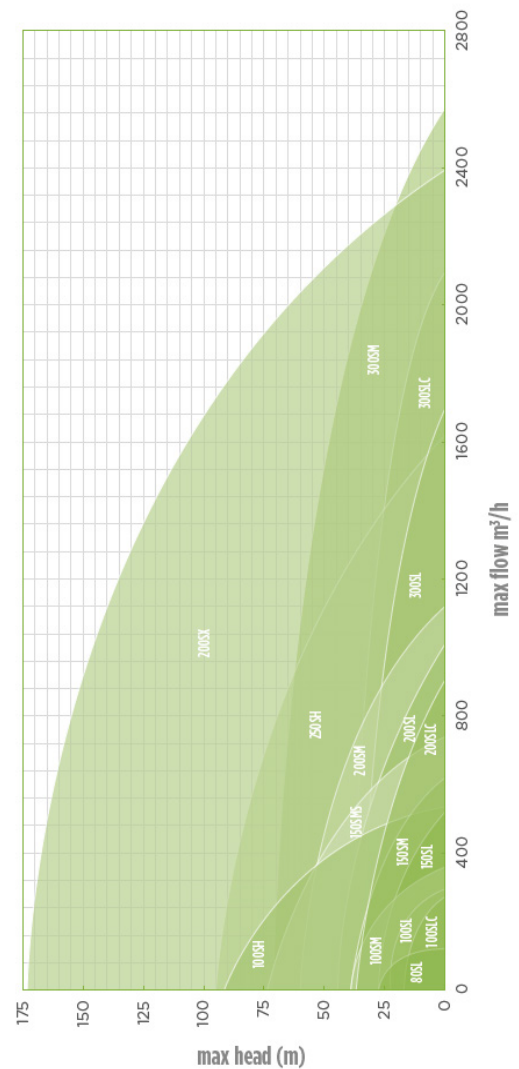
KEY APPLICATIONS

- Quarrying
- Mining
- Sewage Handling

SOLID HANDLING PUMP RANGE

Pump No.	Model No.	Max Flow	Max Head
80SL	PP43075	100m ³ /h	22m
100SL	PP44S8	200m ³ /h	13m
100SM	PP44S10	320m ³ /h	40m
100SH	PP64S17	520m ³ /h	82m
150SL	PP66S10	525m ³ /h	30m
150SM	PP66S12	800m ³ /h	55m
150SH	PP66S17	1000m ³ /h	110m
150SX	PP86S20	950m ³ /h	160m
200SL	PP88S12	1025m ³ /h	45m
200SX	PP128S22	2400m ³ /h	180m
250SH	PP108S17	1600m ³ /h	95m
300SL	PP1212S17	1550m ³ /h	45m
300SM	PP1212S17T	2100m ³ /h	75m

PERFORMANCE TOMBS (TO BE USED FOR GUIDANCE ONLY)



HIGH PRESSURE



Designed to operate at **pressures up to 24 bar** and **flows beyond 2000m³/h**, the Pioneer range of high pressure dry-prime pumps are built to operate in the harshest conditions with great reliability and performance. Using the highest grade materials and superior hydraulic performance, the Pioneer Prime pumps are the pump of choice for mines, petrochemical and industrial markets around the world.

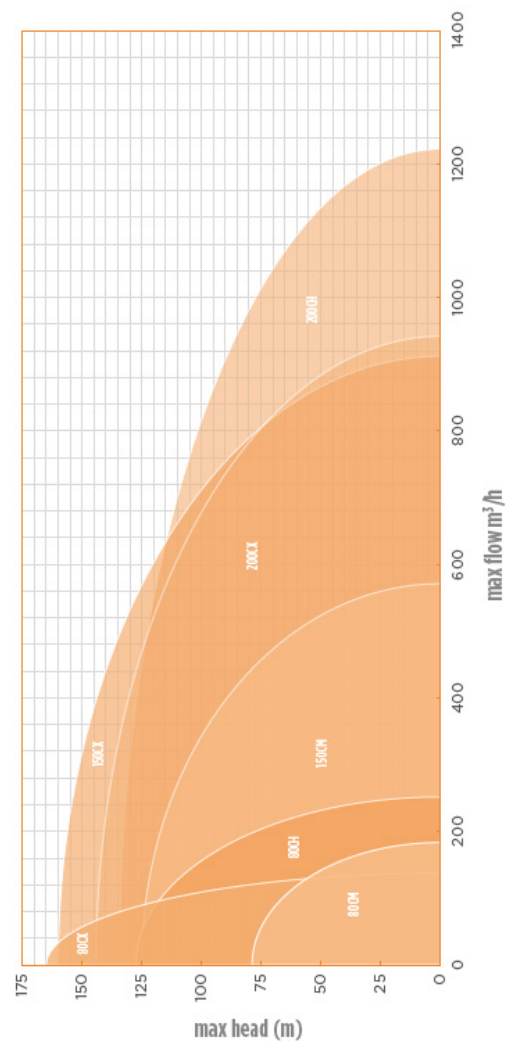
KEY APPLICATIONS

- Fire Standby
- Jetting
- Tank Cleaning

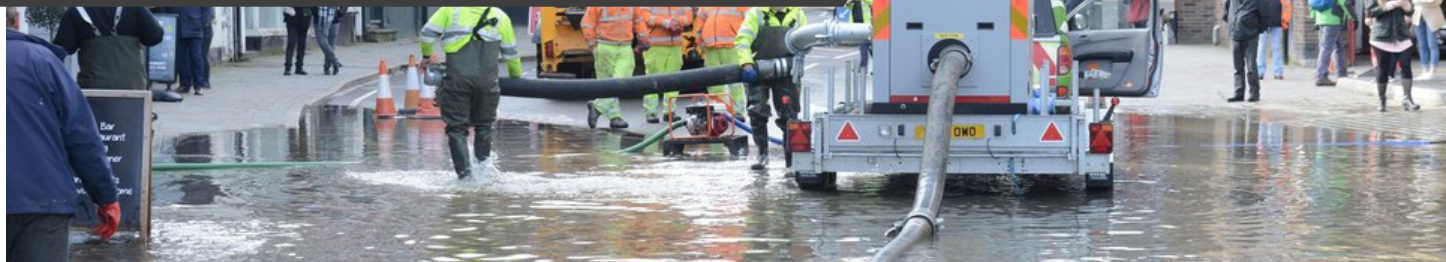
HIGH PRESSURE PUMP RANGE

Pump No.	Model No.	Max Flow	Max Head
80CL	PP54C14T	160m ³ /h	65m
80CM	PP53C14	210m ³ /h	90m
80CH	PP63C17	220m ³ /h	150m
80CX	PP43C21	130m ³ /h	170m
100CM	PP64C14	380m ³ /h	90m
100CH	PP64C17	390m ³ /h	160m
100CX	PP64C21	320m ³ /h	185m
150CL	PP86C14	900m ³ /h	75m
150CM	PP86C17B	550m ³ /h	125m
150CH	PP86C17	900m ³ /h	125m
150CX	PP86C21	900m ³ /h	165m
200CH	PP108C18	1200m ³ /h	140m
200CX	PP108C24	1100m ³ /h	210
250CM	PP1010C14	1500m ³ /h	80m
300CM	PP1212C17	2650m ³ /h	100m

PERFORMANCE TOMBS (TO BE USED FOR GUIDANCE ONLY)



VORTEX



Pioneer Prime vortex pumps are specifically designed for sewage and wastewater applications which contain large amounts of stringy solids and rag. Combining the very latest high efficiency vortex impeller designs with Pioneer priming technology has resulted in the **highest performing vortex portable pumpset in the world.**

A choice of configurations and materials of construction are available, including optional 27% chrome iron, CD4MCu duplex stainless steels, to ensure the best possible solution to your requirements.

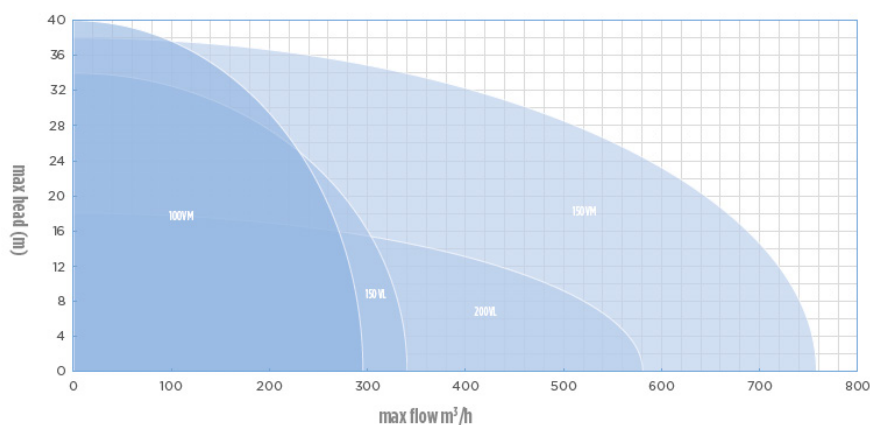
KEY APPLICATIONS

- Sewage Handling
- Flood management
- Wastewater management

VORTEX PUMP RANGE

PERFORMANCE TOMBS (TO BE USED FOR GUIDANCE ONLY)

Pump No.	Model No.	Max Flow	Max Head
100VL	PP44V8	180m ³ /h	14m
100VM	PP44V10	210m ³ /h	37m
150VL	PP66V10	330m ³ /h	26m
150VM	PP66V12	470m ³ /h	36m
200VL	PP88V12	610m ³ /h	24m
200VM	PP88V12	735m ³ /h	35m

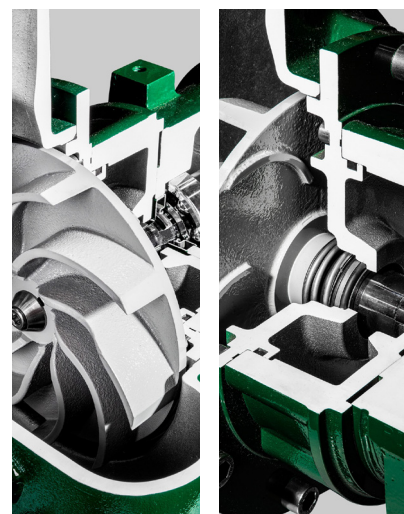
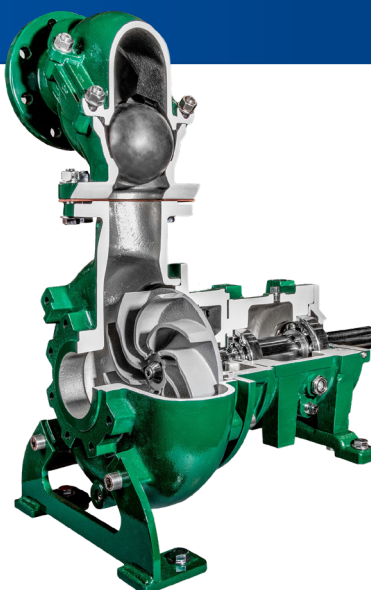


VORTEX PUMP BENEFITS

Eliminate costly and disruptive downtime by passing through the most challenging solids with Vortex Series™ pumps.

Features:

- Available in 4" to 8" sizes
- Uses a recessed ductile iron impeller, ideal for applications where fluid conditioning, macerating, or mix-prevention are unnecessary
- Vortex hydraulics are engineered to save users time by eliminating internal parts, like wear plates and chopper blades, that would otherwise have to be monitored, adjusted and replaced



SELF-PRIMING

 **PIONEER PUMP**

 **Franklin Electric**

Pioneer self-priming pumps are designed for reliable solids and clear liquids handling. After initial priming, they continue to re-prime – for low maintenance and cost-effective performance. Constructed with the best materials including standard heavy-wall ductile iron volute and 17-4 PH stainless steel shaft for durability and peace of mind.

KEY BENEFITS

- External shimless impeller adjustment allows user to easily adjust the tolerance between the impeller and wearplate
- Cartridge type tungsten mechanical seal makes for ease of maintenance and simple installation

GT SERIES

Engineered for increased durability and operation at higher speeds than the industry standard for self-priming pumps.

Features:

- Larger shaft design, heavy-duty bearing frame and ductile iron construction
- Unique suction design improves NPSHr and alleviates abrasion wear on pump
- Distinct cover combines both the fill access port and flapper check valve into one to improve ease of use



GS SERIES

A cost-effective solution for high head applications with high performance demands.

Features:

- Designed to handle solids and clear liquids while providing exceptional performance and reliability
- Pump footprint is compatible with other manufacturer models, making it an ideal direct replacement option
- Rotating assemblies are interchangeable with other industry standard self-priming pumps



RANGE OF PUMP ENDS

PUMP END CONFIGURATION	FLOODED SUCTION (NO PRIMING)			VACUUM-ASSISTED DRY PRIMING			SELF-PRIMING PUMPS	
	CLEAR LIQUIDS	SOLIDS HANDLING	VORTEX SERIES	CLEAR LIQUIDS	SOLIDS HANDLING	VORTEX SERIES	GT SERIES	GS SERIES
Pump Size	3-12" (80-300 mm)	4-18" (80-460 mm)	4-8" (100-200 mm)	3-12" (80-300 mm)	4-18" (80-460 mm)	4-6" (100-150 mm)	3-6" (76-150 mm)	3-10" (76-250 mm)
Flow Range	20-18,500 gpm (4-4,200 m³/h)		1,450-3,600 gpm (329-818 m³/h)	20-18,500 gpm (4-4,200 m³/h)		1,450-2,300 gpm (329-522 m³/h)	660-2,250 gpm (150-511 m³/h)	490-3,450 gpm (111-783 m³/h)
Max Head	850+ feet (260+ meters)	700+ feet (210+ meters)	150+ feet (46+ meters)	850+ feet (260+ meters)	700+ feet (210+ meters)	130+ feet (40+ meters)	250+ feet (76+ meters)	175+ feet (53+ meters)
Solids Size	0.5-2.3" (10-60 mm)	2-4.5" (50-115 mm)	3.15-5.12" (80-130 mm)	0.5-2.3" (10-60 mm)	2-4.5" (50-115 mm)	3.15-4.92" (80-125 mm)	2.5-3" (63-76 mm)	
Wet End Material	Ductile Iron		Ductile Iron	Ductile Iron		Ductile Iron	Ductile Iron	
Impeller Material	CA6NM Stainless Steel		Ductile Iron	CA6NM Stainless Steel		Ductile Iron	Ductile Iron	

PIONEER PUMP SOLUTIONS	STANDARD CENTRIFUGAL PUMPS			PIONEER PRIME PUMPS			SELF-PRIMING PUMPS	
	CLEAR LIQUIDS	SOLIDS HANDLING	VORTEX SERIES	CLEAR LIQUIDS	SOLIDS HANDLING	VORTEX SERIES	GT SERIES	GS SERIES
Models	SC32C10	SC44S8	SC44V10	PP425C75	PP44S8	PP44V10	GT3	GS3
	SC425C75	SC44S8B	SC66V10	PP425C75	PP44S8B	PP66V10	GT4	GS4
	SC425C10	SC44S10	SC66V12	PP425C10	PP44S10	PP66V12	GT6	GS6
	SC43C75	SC64S12	SC88V12	PP43C75	PP64S12	-	-	GS8
	SC43C10	SC64S17	-	PP43C10	PP64S17	-	-	GS10
	SC43C21	SC66S10	-	PP43C21	PP66S10	-	-	-
	SC44C75	SC66S12	-	PP44C75	PP66S12	-	-	-
	SC53C14	SC66S14	-	PP53C14	PP66S14	-	-	-
	SC54C75	SC86S17	-	PP54C75	PP86S17	-	-	-
	SC63C17	SC86S20	-	PP63C17	PP86S20	-	-	-
	SC64C10	SC88S12	-	PP64C10	PP88S12	-	-	-
	SC64C14	SC108S17	-	PP64C14	PP108S17	-	-	-
	SC64C17	SC128S20	-	PP64C17	PP128S20	-	-	-
	SC64C21	SC128S22	-	PP64C21	PP128S22	-	-	-
	SC66C14	SC1212S17	-	PP66C14	PP1212S17	-	-	-
	SC86C95	SC1414S17	-	PP86C95	PP1414S17	-	-	-
	SC86C10	SC1818S22	-	PP86C10	PP1818S22	-	-	-
	SC86C14	-	-	PP86C14	-	-	-	-
	SC86C17	-	-	PP86C17	-	-	-	-
	SC86C17B	-	-	PP86C17B	-	-	-	-
	SC86C21	-	-	PP86C21	-	-	-	-
	SC108C18	-	-	PP108C18	-	-	-	-
	SC108C24	-	-	PP108C24	-	-	-	-
	SC1010C14	-	-	PP1010C14	-	-	-	-
	SC1212C17	-	-	PP1212C17	-	-	-	-

TELEMETRY MODULES



The Pioneer Telemetry system allows our customers to remotely control and monitor their diesel pumpsets from anywhere in the world. The telemetry system can be fitted on all Pioneer diesel pumpset models, ranging from <19kW to >1000kW; inclusive of EU Stage II to Stage V. With the launch of Pioneer's new EU Stage V compliant EVO range, Telemetry is now a popular optional extra, especially for rental fleets where tracking and monitoring of assets is essential.

FEATURES

- Remote stop start & monitoring of pumpsets
- Pump speed controls
- Customisable reports
- Location tracking with Geofence capability
- Live pump discharge and suction pressure monitoring
- Fuel level monitoring and alarm
- E-mail and text notifications
- Web based software



MTP SERIES SUBMERSIBLE



The MTP Series heavy-duty dewatering submersible pump is made from hi-spec materials, incorporating generous material thickness and includes adjustable hydraulics, affording you the peace of mind to focus on your core business.

KEY BENEFITS

- Reduce operating costs with a high-performance impeller design that provides more flow with less horsepower
- Minimize maintenance and overhead costs

FEATURES

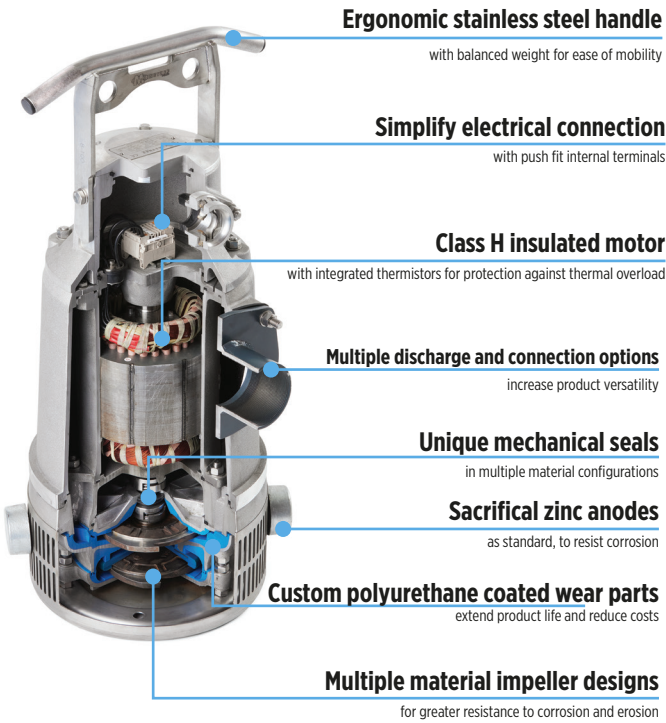
Our best in class standard centrifugal clear liquid processing pumps optimize performance in high pressure applications.

Features:

- Available in two versions
- Highly resistant and lights thanks to case aluminium parts, impellers in stainless steel alloy, polyurethane lining in the wet end components and Viton mechanical seal with hard faces (WCCR/SiC)
- Models 8kW-HH and 90kW-HH contain dual impellers
- Robust design ensures durability and reduced maintenance time and costs
- The wet end of the pump is lined with a special polyurethane offering additional resistance to erosion from sand, silt or fines.
- Water proof terminal box reduces risk of damage in harsh operating conditions
- Three-phase high efficiency motors
- Heads up to 213m
- Flows up to 530m³/h

High Head	Size	Max Flow	Max Head
5kW	2"	50m ³ /h	43m
8kW	3"	47m ³ /h	75m
20kW	4"	162m ³ /h	71m
37kW	4"	216m ³ /h	91m
90kW	4"	198m ³ /h	213m

High Volume	Size	Max Flow	Max Head
5kW	3"	105m ³ /h	20m
8kW	4"	155m ³ /h	27m
20kW	6"	342m ³ /h	37m
90kW	6"	522m ³ /h	103m



Franklin Electric is a global leader in the manufacturing and distribution of products and systems focused on the movement and management of water. We offer pumps, motors, drives, and controls for use in a wide variety of agricultural, commercial, industrial, municipal, and residential applications.

Contact Us!

Phone: +44 (0) 1449 736 777
E-mail: sales@pioneerpump.co.uk



Pioneer Pump Ltd
Pond Hall Road
Hadleigh
Ipswich
Suffolk
United Kingdom
IP7 5PN

pioneerpump.com

M9050 03-23